

Literacy

Beginning to write labels and captions using our phonics skills. Recognising and writing our names.

Listening to stories and answering comprehension questions about them. Being able to retell what has happened in a story.

Maths

Number cardinality - focus on understanding numbers 0, 1, 2, 3, 4, 5.
Positional language.

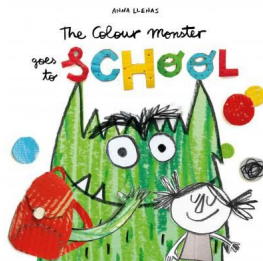
Physical Development

Gross Motor Skills: Skipping, hopping, stand on one leg and hold a pose for a game like musical statues. Use large-muscle movements to wave flags and streamers, paint and make marks.
Fine Motor Skills: Beginning to use one handed tools like scissors and pencils

We Are Family



EYFS



Key Text: The Colour Monster Goes to School

Understanding the World

Learning about our own life story and what makes our family special and unique.
Exploring using all our senses in hands-on exploration of natural materials in Forest Schools.

PSED

Learning to show more confidence in new social situations. Play with one or more other children, extending and elaborating play ideas.

Expressive Art and Design

Roleplaying using small world toys for example acting out a family. Singing songs and playing instruments.

Communication and Language

Enjoy listening to longer stories and can remember much of what happens. Understand a question or instruction that has two parts
Vocabulary: family, house, home, unique, different, special, environment, belonging.

Geography

Use simple fieldwork and observational skills to study the geography of the school and identify key human and physical features of its surrounding environment.
Plan and draw a map from school to St Thomas's church for the Harvest Festival using compass points.

History



Use words and phrases linked to time.
Describe things that happened to themselves and other people in the past focusing on their school history



Music



Use voices in different ways by singing songs for the Harvest festival. Appraise music from around the world.

PE

Explore space, direction, levels and speeds within dance.
Compose and link actions to make simple movement phrases.



Year 1
Autumn

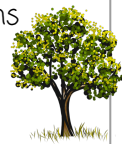
We Are Family



Key Text:
Three Little Pigs
In Every House on
Every Street
Martha Maps It
Out

Science

Investigate the properties of materials through investigations of the Three Little Pigs houses.
Conduct simple investigations and answer questions about what happened.
Observe and describe weather associated with the seasons (Summer to Autumn).



Computing

Understand what is inappropriate online content and know to report it to a trusted adult. Keep personal information private.
Understand what is inappropriate online content and know to report it to a trusted adult. Recognise inappropriate online content.

Art

To gain knowledge of sketching and line through drawings of buildings from the Groves.

PSHE

Learn how to develop a variety of healthy and respectful relationships. Learn how to identify risky or negative relationships and ask for help.

Geography

Use simple fieldwork and observational skills to study the geography of the school and identify key human and physical features of its surrounding environment.

Plan and draw a map from school to St Thomas's church for the Harvest Festival using compass points.

History



Understand and use the words past and present when telling others about an event. Recount changes in own school History



Music

Use voices expressively and creatively by singing songs for the Harvest Festival. Appraise music from around the globe.

PE

Explore space, direction, levels and speeds within dance. Compose and link actions to make simple movement phrases.



Year 2
Autumn

We Are Family



Key Text:
Three Little Pigs
In Every House on
Every Street
Martha Maps it
Out

Science

Investigate the properties of materials through investigations of the Three Little Pigs houses and discuss the suitability of materials
Conduct simple investigations and answer questions about what happened.
Observe and describe weather associated with the seasons and how day length varies (Summer to Autumn).



Computing

Understand what usernames and passwords are and why they are important. Use usernames and passwords safely. Understand that we can respond to inappropriate online content in different ways. Respond appropriately to inappropriate online content.

Art

To gain knowledge of sketching and line through drawings of buildings from the Groves.

PSHE

Learn how to develop and maintain a variety of healthy and respectful relationships within a range of contexts. Learn how to identify and respond to risky or negative relationships and ask for help.